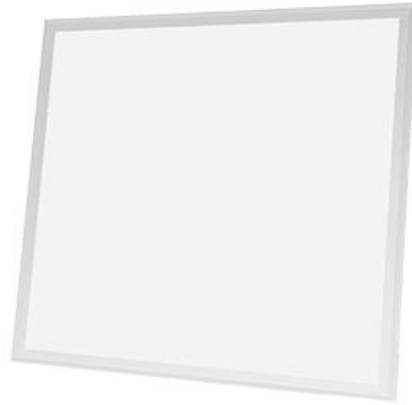


# EDGE-LIT PANEL LIGHT

## ELP Series



### ■ ADVANTAGE

- cETLus, DLC 5.1 premium
- 5 years warranty
- 0-10v dimmable driver
- CCT : 3000K-6500K
- PF>0.90 , CRI>80
- Input voltage: AC100-277V
- Lumen: 130Lm/W
- Reduces energy consumption up to 60%
- Application: office, schools, hospital, library etc



### ■ DETAILS

#### Features

- Solid structure, ultra-slim aluminum frame design.
- Non-yellowing lens.
- Easy installation and low maintenance.
- High-quality LEDs, provide bright and uniform lighting.
- Compatible with standard 0-10V dimmer.

#### Installations

- Can be recessed into grid ceiling.
- Suspend the panel light by using suspension wire.
- Using surface mounted kit accessories to surface mounted.

#### Certifications

- DLC 5.1 premium.
- Comply with the requirements of the Standard(s) for Luminaires (CAN/CSA-C22.2 No. 250.0) and are identified with the cETL Listed Mark.

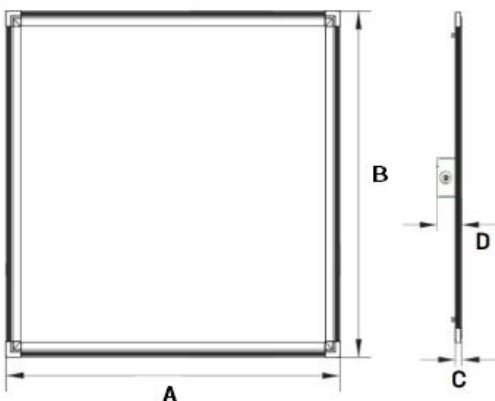
#### Accessories

- Emergency battery , motion sensor, surface mounted kits for option.

#### Warranty

- All products from DIMI LIGHT are guaranteed with 5 years' warranty.
- See [Warranty policy from DIMI LIGHT](#) for additional information.

### ■ DIMENSIONS



SIZE	A (inch)	B (inch)	C (inch)	D (inch)
1x4ft	47.42"	11.93"	0.47"	1.97"
2x2ft	23.74"	23.74"	0.47"	1.97"
2x4ft	47.42"	23.74"	0.47"	1.97"

## ■ SPECIFICATION

	MODEL	SIZE	WATT	CCT	LUMEN	EFFICACY
<input type="checkbox"/>	DM-P71436W-XXK-ZZ	1x4ft	36W	3000K-6500K	4680Lm	130Lm/W
<input type="checkbox"/>	DM-P72230W-XXK-ZZ	2x2ft	30W	3000K-6500K	3900Lm	130Lm/W
<input type="checkbox"/>	DM-P72236W-XXK-ZZ	2x2ft	36W	3000K-6500K	4680Lm	130Lm/W
<input type="checkbox"/>	DM-P72440W-XXK-ZZ	2x4ft	40W	3000K-6500K	5200Lm	130Lm/W
<input type="checkbox"/>	DM-P72448W-XXK-ZZ	2x4ft	48W	3000K-6500K	6240Lm	130Lm/W
<input type="checkbox"/>	DM-P72460W-XXK-ZZ	2x4ft	60W	3000K-6500K	7800Lm	130Lm/W

## ■ ACCESSORIES (order separately)

- Emergency Battery
- Motion Sensor

- Remote Controller
- Suspension Kit

- 1x4ft Surface Mounted Kit
- 2x2ft Surface Mounted Kit
- 2x4ft Surface Mounted Kit



### Emergency battery

- Output current and voltage: 420-800mA 25V 48V.
- Charging time: 24 hours.
- Switchable emergency power: 8W/12W/15W
- Illumination time: 90 minutes.
- Slim design, easy to install.



### Surface mounted kit

- Perfect for panel light, available in 1x4ft, 2x2ft, 2x4ft.
- High quality aluminum material with white coating, corrosion and oxidation resistance.



### Suspension Kit

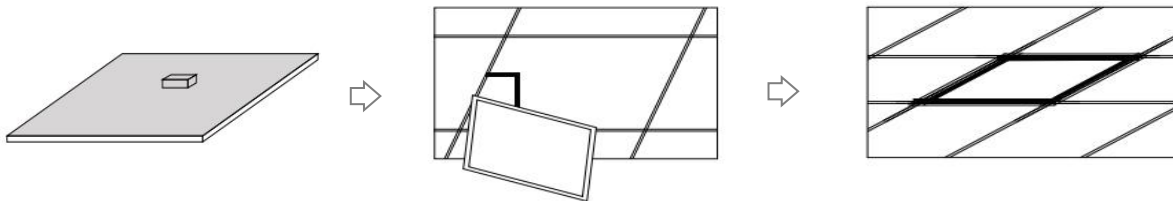
- For suspend the strip light
- Material: stainless steel

## PACKING INFO

SIZE	2PCS/CARTON			PALLET		CONTAINER		
	DIMENSION(INCH)	N.W(LBS)	G.W(LBS)	PCS	CTNS	20'GP(PCS)	40'GP(PCS)	40HQ(PCS)
1x4ft	50.00"x14.17"x3.94"	14.33	16.09	100	50	1224	2536	2974
2x2ft	26.00"x26.00"x4.00"	14.33	16.09	120	60	1284	2662	3122
2x4ft	50.00"x26.00"x4.00"	26.46	30.42	60	30	660	1368	1604

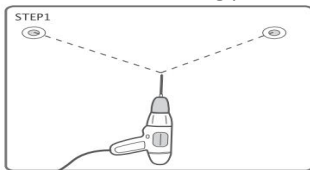
## INSTALLATIONS

### ❖ Recessed

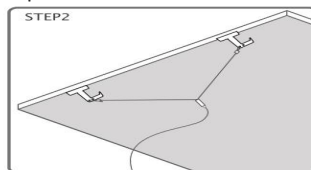


### ❖ Suspended

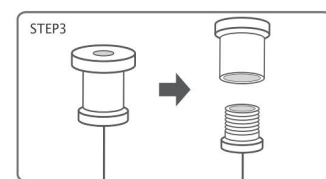
**Step 1:** According to the width of the panel light, drill 2 mounting holes on the mounting position.



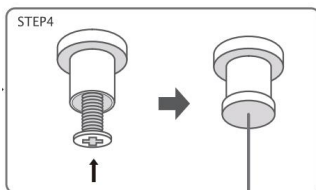
**Step 2:** Button the panel light with the buckle of the equipped rope.



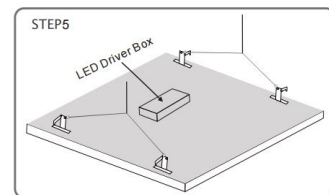
**Step 3:** Twist off the rope grab device, and divide it into two parts: the upper cover and lower cover.



**Step 4:** Fix the upper cover into prepared mounting holes with self-tapping screws (not included), and then twist on the lower cover.

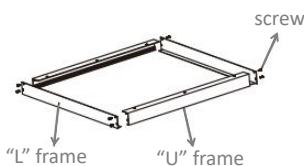


**Step 5:** Connect LED panel light by the hook of suspension wire.

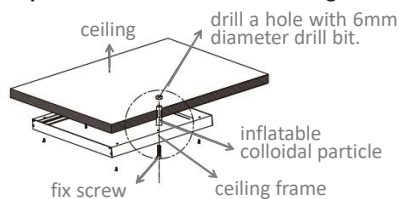


### ❖ Surface mounted

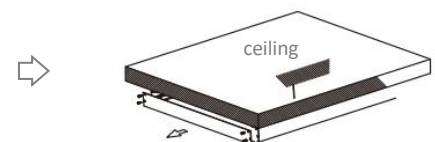
**Step 1:** Assembly the frame well.



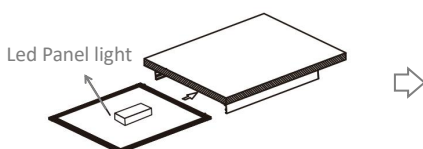
**Step 2:** Fix the frame on the ceiling.



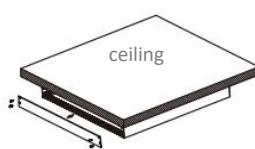
**Step 3:** Take out one "L" bracket From the frame.



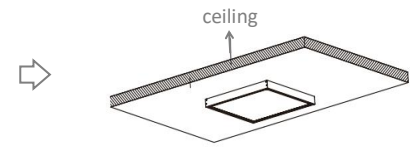
**Step 4:** Insert Led panel to the frame.



**Step 5:** Fix "L" bracket to the frame.

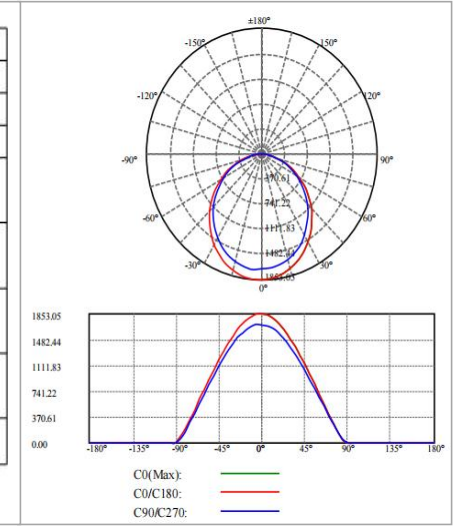
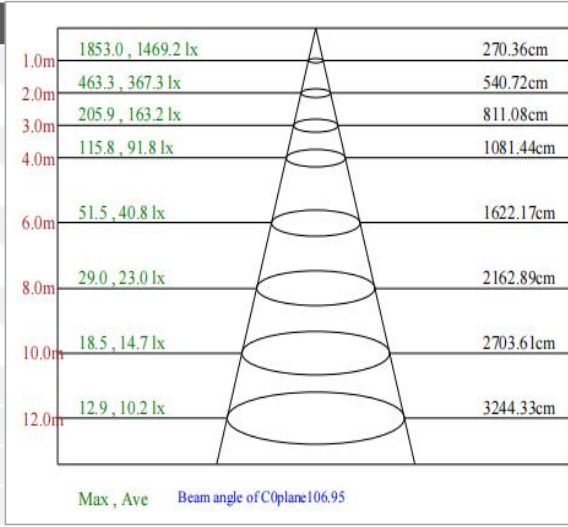


**Step 6:** Fix "L" bracket to the frame.

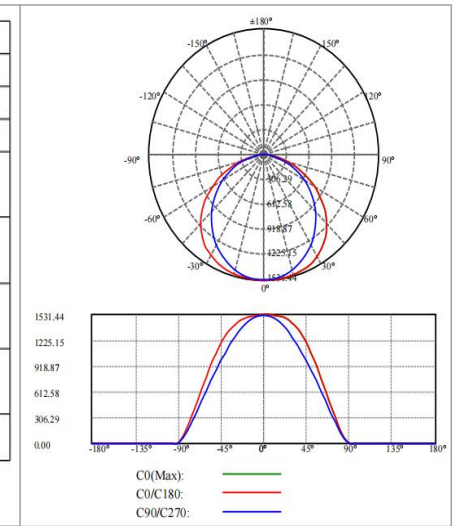
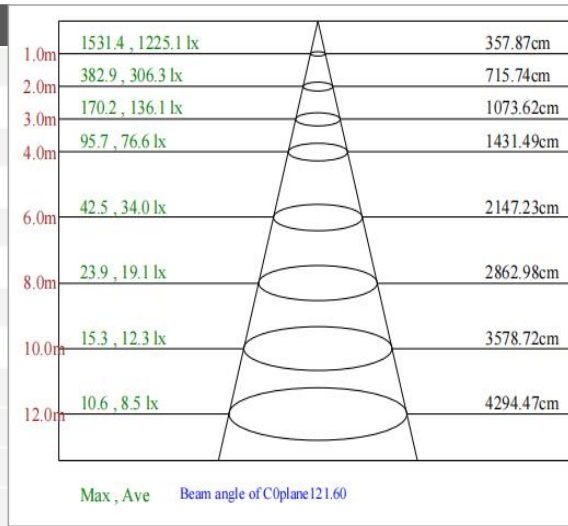


## PHOTOMETRIC DATA

DM-P71436W-50K-ZZ	
Watt	35.6 W
PF	0.94
CRI	84
THD	14.8%
Flux	4963 lm
Efficacy (AC)	139.4 lm/W
CCT	5000K
Dimmable	0-10 v
Voltage Range	100-277 V
Frequency	50 / 60 Hz
Beam Angle	120°
Operating Temperature	-30°C to 45°C



DM-P72236W-50K-ZZ	
Watt	36 W
PF	0.94
CRI	84
THD	12.1%
Flux	4684 lm
Efficacy (AC)	130.2 lm/W
CCT	5000K
Dimmable	0-10 v
Voltage Range	100-277 V
Frequency	50 / 60 Hz
Beam Angle	120°
Operating Temperature	-30°C to 45°C



DM-P72448W-50K-ZZ	
Watt	45 W
PF	0.94
CRI	84
THD	12.8%
Flux	5973 lm
Efficacy (AC)	132.8 lm/W
CCT	5000K
Dimmable	0-10 v
Voltage Range	100-277 V
Frequency	50 / 60 Hz
Beam Angle	120°
Operating Temperature	-30°C to 45°C

